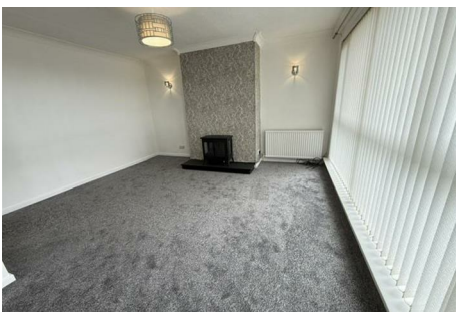


# GILMORE ESTATES

Property Sales & Lettings



## Western Avenue , Prudhoe, NE42 6NU

Situated on Western Avenue in the charming town of Prudhoe, this delightful four-bedroom semi-detached house offers a perfect blend of comfort and convenience. With a spacious reception room, this home is ideal for both relaxation and entertaining. The property boasts four well-appointed bathrooms, including two en-suite bedrooms, ensuring ample facilities for family and guests alike.

The house is equipped with gas central heating and double-glazed windows, providing warmth and energy efficiency throughout the year. An added benefit is the garage located in a nearby block, offering secure parking and additional storage space.

The enclosed rear garden presents a private outdoor retreat, perfect for enjoying sunny days or hosting gatherings. This property is available unfurnished, allowing you the freedom to personalise the space to your taste.

Situated within walking distance to the town centre, residents will find a variety of shops, cafes, and amenities at their fingertips. Additionally, the nearby railway station and public transport options make commuting and exploring the surrounding areas effortless.

**£1,100 Per Calendar Month**

# Western Avenue

, Prudhoe, NE42 6NU



- FOUR BEDROOM
- GARAGE
- AVAILABLE IMMEDIATELY
- SEMI- DETACHED HOUSE
- GARDENS
- TWO EN-SUITE BEDROOMS
- UNFURNISHED

## ENTRANCE HALL

65'6" x 10'9" (19.98 x 3.29)

## GROUND FLOOR HALL

7'0" x 5'6" (2.14 x 1.70)

## LOUNGE

20'0" x 14'1" (6.12 x 4.30)

## KITCHEN

7'1" x 13'10" (2.17 x 4.23)

## TO THE FIRST FLOOR

## BEDROOM ONE

11'7" x 14'4" (3.55 x 4.38)

## DRESSING ROOM

11'8" x 5'6" (3.58 x 1.70)

## EN-SUITE

8'3" x 5'6" (2.52 x 1.68)

## BEDROOM TWO

9'1" x 13'10" (2.77 x 4.23)

## EN-SUITE

7'3" x 5'5" (2.21 x 1.67)

## BEDROOM THREE

7'0" x 11'7" (2.14 x 3.54)

## BEDROOM FOUR

7'0" x 8'9" (2.14 x 2.69 )

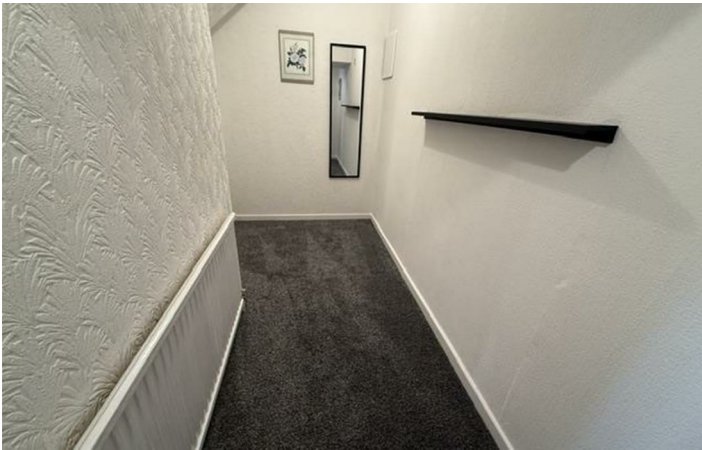
## SHOWER ROOM

6'1" x 6'7" (1.87 x 2.01)

## EXTERNALLY



[Directions](#)





# Floor Plan

These particulars, whilst believed to be accurate are set out as a general outline only for guidance and do not constitute any part of an offer or contract. Intending purchasers should not rely on them as statements of representation of fact, but must satisfy themselves by inspection or otherwise as to their accuracy. No person in this firm's employment has the authority to make or give any representation or warranty in respect of the property.

